

BRA-135F XRF Energy Dispersive General Purpose Spectrometer



BRA-135F XRF Energy Dispersive General Purpose Spectrometer



- Wide range of detected chemical elements - 9F - 92U

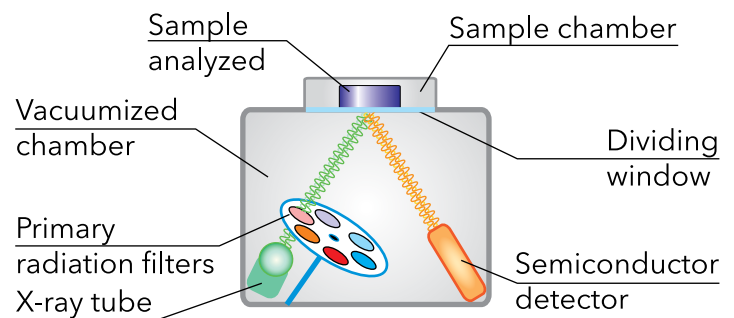
- High sensitivity due to optimal X-ray optical path

- High resolution of ultra-modern SDD detector

- Fundamental parameter (FP) Method for steels and alloys quantitative analysis

- Built-in control PC

- Patent for X-ray transparent dividing window



Completely satisfies the requirements of radiation safety.

X-ray fluorescence energy dispersive general purpose spectrometer BRA-135F allows simultaneous determination of chemical elements by characteristic energies in the 1 to 30 keV range (where elements from F till U are fitted) over a wide scope of concentrations from hundreds ppb. BRA-135F analyzes solid, powder and liquid samples, thin layer on the surface or precipitated on filters.

Operating principle

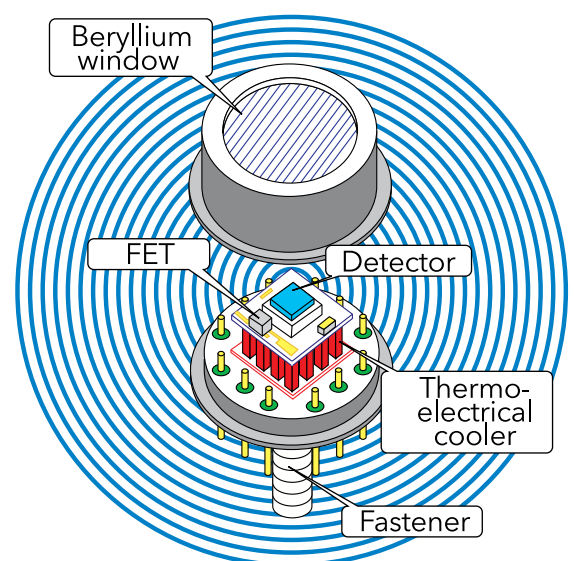
The spectrometer operating principle is based on excitation of fluorescence radiation of atoms in the substance being analyzed by radiation coming from the low-power X-ray tube. The fluorescence radiation from the sample gets into the SDD semiconductor detector where quanta of different energies are converted into electrical pulses, which amplitudes are proportional to the energy of absorbed quanta. Pulse-frequency rate with the certain amplitude is proportional to the chemical element concentration in the sample.

Method advantages

X-ray fluorescence analysis (XRF) occupies a leading position among the other methods for determination of the quantitative elemental composition of substances. XRF advantages are as follows: nondestructive measurements, multielement determination, express method, high accuracy of analysis, wide range of measured concentrations, development level of quantitative analysis theory, possibility for quantitative analysis with absence of standard samples.

High efficiency SDD detector

The silicon drift detector (SDD) with ultra-thin entrance window allows to register X-ray radiation in wide energy range on retention of energy resolution and response.



Detector scheme

Low detection limit

Owing to optimally selected materials and thickness of primary radiation filters, high transparent X-ray optical scheme, a low detection limit can be achieved for all elements to be analyzed. In the range of light elements from ⁹F to ¹⁷Cl low-energy radiation registration becomes possible using vacuum where the optical path of radiation passes.

Large or irregular shape samples

It is possible to measure large-size or odd-shaped samples:

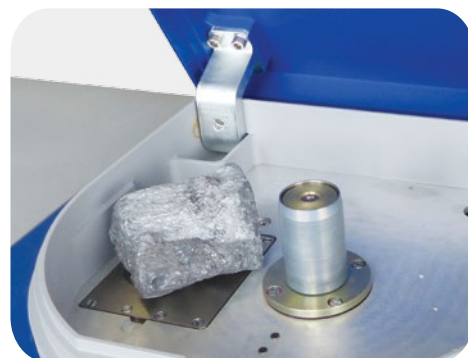
- Large-size minerals and nuggets;
- Industrial articles for analysis for ROHS requirements;
- Metals and alloys incoming control;
- Analysis of liquids in the special cells or on the special filters.

Compact body and functionality

- The housing spectrometer ensure fully radiation-protection;
- Handles for carrying;
- Built-in operational computer (PC);
- LAN port for remote control and archiving of measurement results;
- LIMS integration is available;
- Easy report creation;
- Password protection and separation of access rights.



Changer is able to carry solid, liquid or powder samples



Irregular shape samples

Technical data

Range of detected elements	⁹ F - ⁹² U
Limits of detection without preliminary enrichment, %	
- for elements from Na to Mg	n*10 ⁻²
- for elements from Al to Cl	0,002
- for elements from K to U	0,0005
Limit of determination at sample preconcentration (depending on chemical element), %	1.5*10 ⁻⁵
Limit of determination in mid group element (liquid), g/dm ³	n*10 ⁻³
Average time of one sample analysis, s	100
Energy resolution on MnKa line at pulses counting rate up to 10 ⁴ s ⁻¹ , not more than, eV	145
Max. voltage of X-ray tube, kV	50
X-ray tube power, W	10
X-ray tube cooling	by air
Primary X-ray radiation filters, pcs	5
Number of samples installed into sample changer, up to	
changer #1 (Ø32, 34 mm samples)	15
changer #2 (Ø32, 34, 36, 40, 44 mm samples)	11
Maximum sample size, mm	Ø 200x60
Ethernet connection	Yes
Possibility for remote control	Yes
Overall dimensions (LxWxH), mm	700x410x400
Instrument weight, max, kg	65
Power	220 V, 50 Hz
Power consumption, W	500

Fields of application



Methodology description

Oil analysis

For measuring purposes of trace elements Al, Ba, Ca, Cu, Fe, Mn, V, Ni, Pb, Zn, P in oils and petrochemicals appropriate methodology was developed.

Analytic complex consisting of BRA-135F and measuring methodology is capable of carrying out quantitative element analysis of petrochemicals in order to define metal trace elements and can be used to analyse exhausted motor oils of aircraft, machines, special motor vehicle in order to identify deterioration rate of engines and define applicability of technical service for it. Methodology is purchased additionally.

Besides BRA-135F could be used for testing as per ASTM D4294 and ASTM D6481. These test methods cover the measurement of sulfur, barium, calcium, magnesium, phosphorus, zinc & chlorine in hydrocarbons, such as lubricating used oil, diesel, naphtha, kerosene, residuals, lubricating base oils, hydraulic oils, grease, jet fuels, crude oils, gasoline (all unleaded), and other distillates. Additionally, sulfur in other products, such as M-85 and M-100, may be analyzed using this technique.

Detection limits of BRA-135F according to certified methodology (ppm):

P	Al	Mn	Ba	Pb	V	Cu	Ni	Fe	Zn	Ca
100	100	5	50	5	5	5	5	5	5	50

Cement materials analysis

For measuring purposes of mass fraction of Na₂O, MgO, Al₂O₃, SiO₂, P₂O₅, SO₃, Cl, K₂O, CaO, TiO₂, Cr₂O₃, MnO, Fe₂O₃, ZnO, SrO into cements and cement production materials (clinkers, raw mixes) suitable method have been developed.

Analysis method includes algorithms of principal components determination using X-ray energy-dispersive fluorescent spectrometers BRA-135F.

Soils analysis special method are developing for soils and clag water analysis.

Soon: Special methods for soils, clay, ground sediments are under development.

Advanced software

BRA-135F software is the optimal combination of high performance and functionality with an intuitive interface and tooltips. Owing to this, performance of routine measurements requires no special trained staff.

Only few simple steps are enough to make a measurement: select the sample position, enter its code, choose the research method and run the analysis.

Excellent methodical support

Bourevestnik JSC has a methodological support of spectrometers, including the development and validation of methods for determining the elemental composition of various materials: oil products, ores, rock, slag, refining products, cement and raw mixes, soil and sediment, water, air.

Qualitative and quantitative analysis

BRA-135F software unveils wide opportunities for on-line receiving of information on the chemical composition of the material to be analyzed. The user chooses the method of substance analysis: qualitative or quantitative.

Registered spectra can be:

- saved in suitably structured archive;
- got out for repeat analysis based on a new calibration characteristics;
- processed as per user's request: added, deducted, KLM-marked;
- scaled.

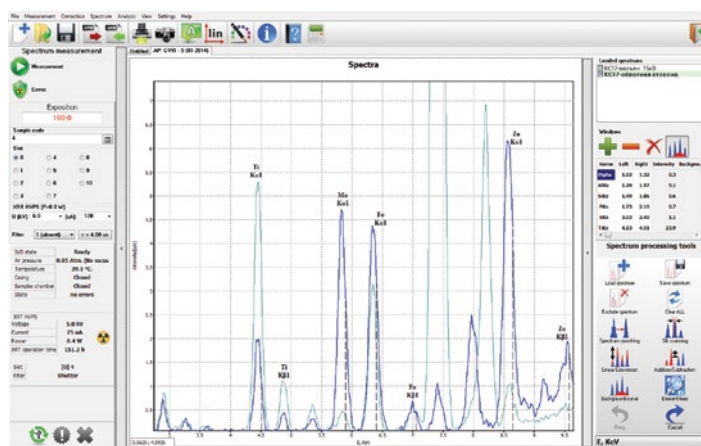
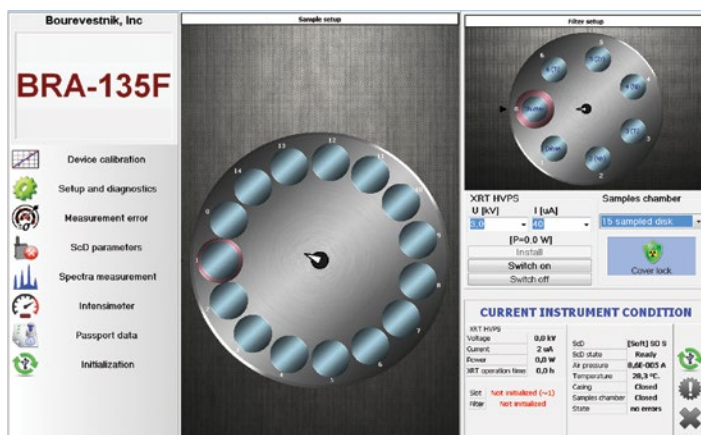
For operator convenience in operation, the auxiliary utilities were implemented to minimize errors during the analysis. For example, semi-automatic marker of lines allows correct identification of spectral lines of different elements.

Fundamental parameters method

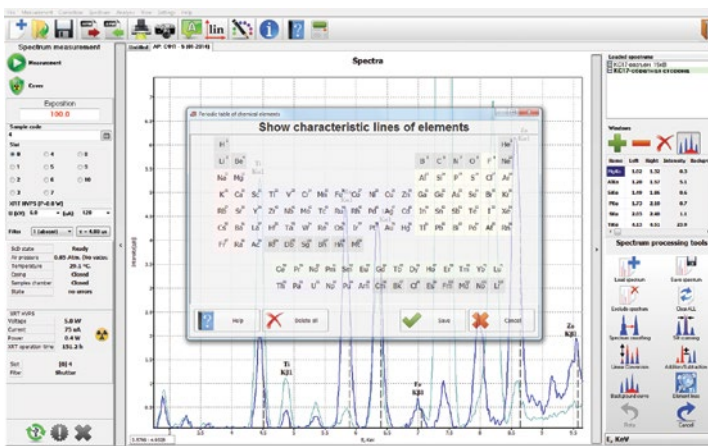
The software implementing fundamental parameters method allows semi-quantitative and quantitative determination of elements within the range from Mg (12) to Pb (82) in solid samples of steels and alloys with mass fraction of 0.1% to 100%.

If there are no standard composition samples, to calibrate the spectrometer and with large list of materials under analysis, the standardless semi-quantitative analysis is implemented, which represents the following dependences:

- integrated spectrometer sensitivity on Z element;
- relative (to the integral sensitivity) intensity of analytical line corrected for background and drift, on sample composition (this dependence was implemented through absorption parameter P).



Spectrum measuring and its processing conditions



Spectrum measuring and its processing conditions

Sample	Date	Type	SPS	GMS	Ratio
1	2014-06-19	Steel	100.0000	100.0000	100.0000
2	2014-06-19	Steel	100.0000	100.0000	100.0000
3	2014-06-19	Steel	100.0000	100.0000	100.0000
4	2014-06-19	Steel	100.0000	100.0000	100.0000
5	2014-06-19	Steel	100.0000	100.0000	100.0000
6	2014-06-19	Steel	100.0000	100.0000	100.0000
7	2014-06-19	Steel	100.0000	100.0000	100.0000
8	2014-06-19	Steel	100.0000	100.0000	100.0000

Fundamental parameters method

Marketing, Advertisement and Sales Department:

Tel.: +7 (812) 458-89-95, 458-86-48
E-mail: marketing@bv.alrosa.ru

Aftersales Service

Tel./Fax: +7 (812) 528-82-83
E-mail: quality@bv.alrosa.ru

Our partners

Bangladesh

Milestone Instruments

Telephone: +88027253468
E-mail: mstoneinst@gmail.com

India

AlfaTech Services

Telephone: +91-11-2544 6275 / 2544 6276
E-mail: alfatech@alfatechservices.com
www.alfatechservices.com

Smart Labtech PVT Limited

Telephone: +91 40-66783744, +91 40 66624394
E-mail: info@smartlabtech.net
smartlabtech.net

Indonesia

PT. Interlab Sentra Solutions Indonesia

Tel (6221) 77840996
E-mail: office@issi-interlab.com

United Arab Emirates

Pasteur Central Labs Ltd

Telephone: +971-2-4467034
E-mail: pasteur@emirates.net.ae
www.pcl-uae.com